



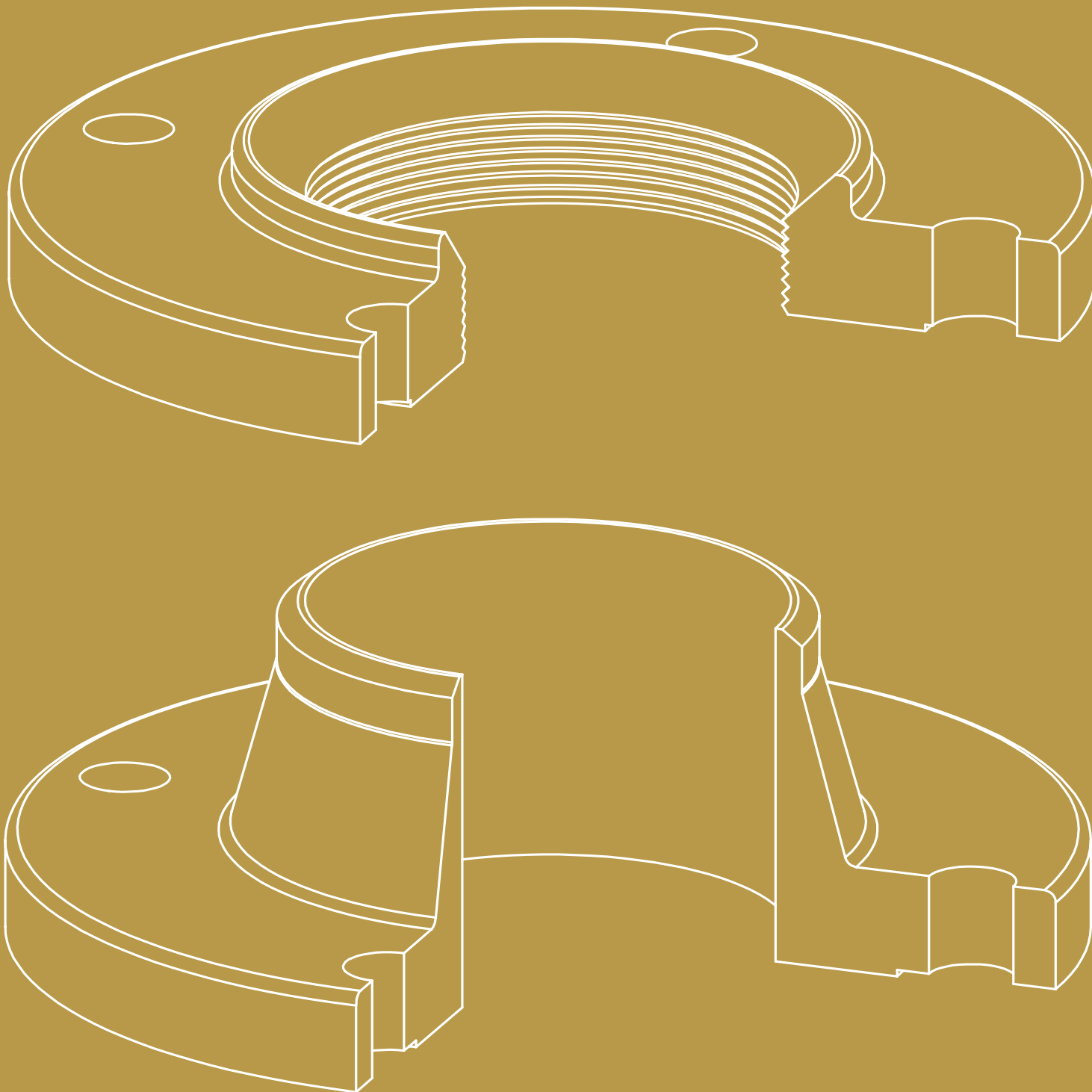
ISO  
9001  
Quality  
Management

ISO  
14001  
Environmental  
Management

ISO  
45001  
Occupational  
Health & Safety  
Management



# VERITAS



## FLANGES & FITTINGS

**Veritas Stainless Co. Pvt. Ltd.**  
Vesco House, 48/50  
Nanubhai Desai Road,  
Mumbai - 400004, India

**Manufacturing unit**  
Unit No. A-47,  
Royal Industrial Hub,  
Bhivandi-Kaman Road,  
Vasai - 401208, India

Tel : +91 22 6651 8888  
[info@veritasstainless.com](mailto:info@veritasstainless.com)  
[www.veritasstainless.com](http://www.veritasstainless.com)



## About Us

VERITAS is a privately owned Manufacture of **Forged Flanges, Tubesheets, Precision Machined components & CNC Turned Parts** from INDIA. with over 35 years of experience across the Oil, Gas, Petrochemical and Utility industries.

VERITAS known around the world for the production of flanges, was established in 1982 and since then it has undertaken the expansion of its product range and the improvement of quality through the development of new technologies and the constant renewal of the machinery

## Quality Assurance

Our products are manufactured in modern facilities under strict quality control system. We are certified under **ISO 9001, ISO 14001, 45001 & Pressure Equipment Directive PED**. All of our products are compliance with the requirements of **JIS, ASME, DIN, BS and special requests**. We offer a complete scope of services taking responsibility for all aspects export process.

We are always doing our best to improve products quality and expanding production range through continuous development. Our business philosophy is to always exceed expectations in quality of products and customer services.

## Our Values

Our values helps us to achieve our goal and are guidelines to deal withour Customers,Business Partners and communities in whichwe operate. We strongly believe in wonderful relationship together and success for all concerned.



## Our Customers

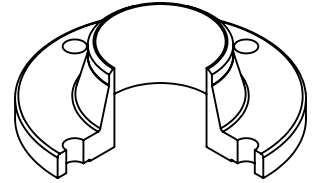
are our best advertising...



## Flanges

**Our high quality steel flanges are forged from a range of materials to standard sizes or to your specifications.**

- › Our standard range of flanges is manufactured to ASME/ANSI B16.5 (NPS ½" through NPS 48" and pressure classes 150 to 2500). Large diameter flanges (up to NPS 60) are forged according to ASME/ANSI B16.47 and API 605.
- › Flanges with diameters of 26-48 inches (NPS) are manufactured to pressure classes from 150 to 600 lbs, according to BS3293
- › AWWA Standard Flanges up to 48" NPS
- › Spectacle Blind/Figure 8 flanges according to API 590/ASME B16.48
- › DIN flanges in sizes ranging from DN10 to DN3600, with ratings of PN6 to PN160

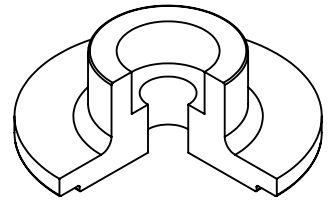


## Non-Standard/ Custom Flanges

**Veritas will work with you to design and manufacture custom flanges for most applications. We can manufacture flanges with:**

- › Maximum diameter of 2000mm
- › Maximum weight of 5000 kg.

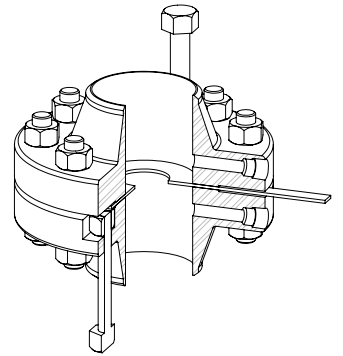
Please contact us for more information.



## Orifice Flange Unions

**We manufacture Orifice Flange Unions to ASME B16.36 (Orifice Flanges) and API 2530 (Orifice Metering of Natural Gas), in sizes from 1/2" to 12", in pressure class 300 through 1500.**

Our Orifice Flange Unions can be forged in a wide range of materials and comprise gaskets, jack screws, pipe plugs, studs and nuts. The hardware is also available in a range of material.

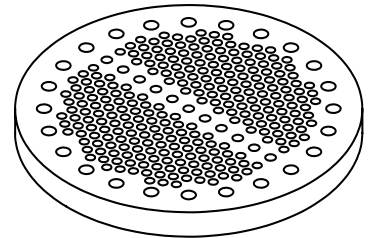


## Tube Sheets

**Tube sheets can be supplied drilled and/or machined to your specifications.**

- › Maximum dimensions of 2000mm x 350mm
- › Maximum weight of 4000kgs.

Please contact us for more information.

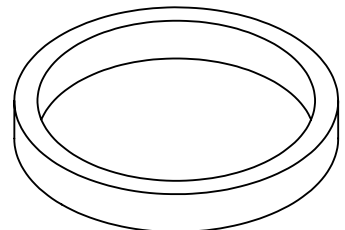


## Rings

**Rings can be forged from carbon, alloy and stainless steels.**

- › Maximum outside diameter - 2000mm
- › Maximum thickness - 350mm
- › Maximum weight - 3000kg

**Rings** can be forged to any specification. Please inquire.



# PRODUCTION RANGE

# VERITAS

## Size

1/2 inch ~ 48 inch (15 mm ~ 1200 mm)

## Products

ASME FLANGE (ASME B16.5) CLASS 150 ~ 2500  
API FLANGE (ASME B16.47 SERIES B) CLASS 75 ~ 900  
MSS FLANGE (ASME B16.47 SERIES A) CLASS 150 ~ 900  
JIS / KS FLANGE 5K ~ 30K  
LONG WELDING NECK FLANGE CLASS 150 ~ 2500  
HUB BLIND FLANGE CLASS 150 ~ 2500  
REDUCING FLANGE  
ORIFICE FLANGE (ASME B16.36) CLASS 300 ~ 2500  
LIGHT WEIGHT FLANGE (ASME B 16.1) CLASS 125  
B.S 3293 FLANGE CLASS 150 ~ 600  
DIN, RING JOINT RTJ & CUSTOM SIZE AVAILABLE  
API 6A 3000-5000 PSI  
HEAVY BARREL FLANGE  
ANCHOR FLANGE

## Materials

ASTM A105 / ASME SA105

ASTM A105N / ASME SA105N

ASTM A182 / ASME SA182 F304, F304L, F316, F316L, F321, F51, F53

ASTM A350 / ASME SA350 GR LF2 (Class 1 and 2)

ASTM A694 / ASTM SA694 F42, F46, F48, F50, F52, F56, F60, F65

NACE MR 0175 / ISO 15156

## Production Capacity

800 METRIC TON PER MONTH

